



A-B

## Accessories

### Adapter

Adapter for Industrial Electrodes

This adapter allows installation of any electrode in in-line holders. The nipple comes with an O-ring for more secure installation.

**HI 6057** 3/4" nipple for electrodes

Adapter, PC Connection

**HI 92150** RS232 to USB

### Auger for Ground Penetration

The auger is supplied with HI 99121 and HI 993310 for direct soil measurement.

**HI 721319** Ground auger



HI 721319

### Bar

Bar, Grounding

This stainless steel AISI 316 grounding bar can be connected to the differential input of all pH and ORP meters provided with this feature, and prevents the electrode from problems due to ground loop current. The life of the electrode will be much longer.

**HI 1283** Grounding bar with 2 m (6.6') cable

Bar, Measuring for Level Controllers

Stainless steel measuring bars for detection of liquid level in tanks, designed to be used with HANNA level controllers and transmitters. Available singly or in packs of 5 pcs. Can be joined for custom lengths. Each bar is 0.5 m (1.7') long.

**HI 731324** 0.5 m (1.7') measuring bar (5 pcs)

**HI 731328** 0.5 m (1.7') measuring bar



HI 731324

Bar, Stir Bars for Magnetic Stirring

Stir bars specifically designed for HANNA stirrers. The PTFE (polytetrafluoroethylene) coating ensures high chemical resistance even with aggressive substances.

**HI 731319** Stir bars (L 25 mm x dia 7 mm/ 1 x 0.3"), specially designed for use with HI 180, and HI 190M, HI 190MB and HI 200M stirrers. (10 pcs.)

**HI 731320** Stir bars (L 50 mm x dia 7 mm/ 2 x 0.3"), designed for use with the HI 300 stirrer series (10 pcs.)

**HI 731316** Stir bars (L 12 mm x dia 5 mm/ 2 x 0.3") for mini Titrators and HI 208 (5 pcs.)

**HI 70486** Stir bars for PCA series, (2 pcs.)



HI 731319

### Base

Base for Checktemp® 1

Handy plastic stand for Checktemp®1

**HI 740024P** Stand for Checktemp®1 (10 pcs)

**HI 740025** Stand for Checktemp®1 (6 pcs)

Base for HI 76405 –see *Electrode Holder*



HI 740024



HI 740026P

## Battery

Battery, 1.5 V

Replacement batteries used in most HANNA testers.

- HI 740026 1.5 V battery (4 pcs)
- HI 740026P 1.5 V battery (12 pcs)
- HI 721301 1.5 V battery (100 pcs)

Battery, 1.5 V AA

Replacement batteries for all HANNA waterproof and printing/logging portable meters.

- HI 740027P 1.5 V AA battery (12 pcs)

Battery, 1.5 V AAA

Replacement batteries.

- HI 740028 1.5 V AAA battery (4 pcs)
- HI 740028P 1.5 V AAA battery (12 pcs)

Battery, 3.6 V AA Lithium

Replacement battery for HI 141 series.

- HI 740033 3.6 V AA Lithium battery

Battery, 9 V

Replacement battery for all HANNA portable meters with non-waterproof housing.

- HI 740029P 9 V battery (10 pcs)

Battery, for AmpHel® Electrodes

Spare battery for amplified pH and ORP industrial electrodes, AmpHel® series.

- HI 740031 Spare battery for AmpHel® electrodes

Battery Cover –see *Cover for Battery Compartment*

## Beaker

Rugged plastic beakers available in several different sizes. For use during testing with HANNA chemical test kits and photometers. Anti-spill ported caps are available separately.

- HI 740036P 100 mL plastic beaker (10 pcs.)
- HI 740037P 20 mL plastic beaker (10 pcs.)
- HI 740223 170 mL plastic beaker
- HI 740224 170 mL plastic beaker (6 pcs.)
- HI 740032P Cap for 20 mL plastic beaker (10 pcs.)
- HI 740034P Cap for 100 mL plastic beaker (10 pcs.)



HI 740223

HI 740037P

## Blades, for Meat pH Electrodes

These stainless steel blades, in conjunction with FC 230, FC 231 and FC 232 pH electrodes, allow easy meat penetration. Two models are available for different depths.

- FC 098 Stainless steel blade for meat pH electrode, 20 mm (0.8")
- FC 099 Stainless steel blade for meat pH electrode, 35 mm (1.4")



FC 098

FC 099

B

## Accessories

### Boot, Shockproof Rubber

These special boots have been designed to protect your instruments and prevent damage due to accidental impact. They can withstand high temperature (up to 200°C / 392°F), ozone and environmental phenomena, and are available in 2 colors.

"Streamlined" style casing

**HI 710024** Shockproof rubber boot, blue

**HI 710023** Shockproof rubber boot, orange

"ERGO" style casing

**HI 710007** Shockproof rubber boot, blue

**HI 710008** Shockproof rubber boot, orange

HI 8010 style casing.

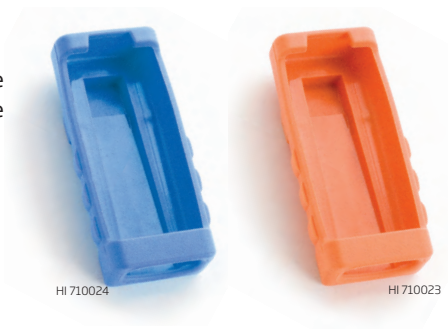
**HI 710009** Shockproof rubber boot, blue

**HI 710010** Shockproof rubber boot, orange

HI 8424 style casing.

**HI 710015** Shockproof silicone boot, blue

**HI 710016** Shockproof silicone boot, orange



### Bottle

Bottle for D.O. Analysis

Glass bottle, supplied with the HANNA chemical test kits and photometer for DO analysis. The bottle is provided with a glass stopper to ensure an air tight seal.

**HI 740038** 60 mL glass bottle and stopper

Bottle, for Olive Oil Acidity

**HI 740053** 100 mL graduated glass bottle with cap (10 pcs)

Bottle, Polyethylene

High density polyethylene bottles, suitable for sampling, mixing and storage. Available in packs of 6 and 10 pcs, and in several capacities, from 30 mL to 1 Gallon (approx. 3.78 L). Polypropylene caps can be ordered separately.

**HI 740056P** 30 mL bottle (10 pcs)

**HI 740058P** 30 mL bottle (10 pcs)

**HI 740059P** Cap for 30 mL bottle (10 pcs)

**HI 740048P** 120 mL bottle (10 pcs)

**HI 740050** 120 mL bottle (6 pcs)

**HI 740049P** Cap for 120 mL bottle (10 pcs)

**HI 740052P** 230 mL bottle (10 pcs)

**HI 740054** 230 mL bottle (6 pcs)

**HI 740055** Cap for 230 mL bottle (6 pcs)

**HI 740070P** 500 mL bottle (10 pcs)

**HI 740072** 500 mL bottle (6 pcs)

**HI 740073P** Cap for 500 mL bottle (10 pcs)

**HI 740046P** 1 L bottle (10 pcs)

**HI 740047P** Cap for 1 liter bottle (10 pcs)

**HI 740044P** 1 Gallon bottle (5 pcs)

**HI 740045P** Cap for 1 Gallon bottle (10 pcs)



### Bottle, Polyethylene, Dropper

Provided with HANNA test kits where one-by-one drop dosing is required.

- HI 740060P** 30 mL dropping bottle (10 pcs)
- HI 740063** 30 mL dropping bottle (6 pcs)
- HI 740061P** Plug for 30 mL dropping bottle (10 pcs)
- HI 740064** Plug for 30 mL dropping bottle (6 pcs)
- HI 740065P** Cap for 30 mL dropping bottle (10 pcs)

### Bottle, Polyethylene, FDA Compliant

These black bottles protect liquids even under direct light. They are available in several capacities, from 30 mL to 1 liter.

- HI 740068P** 30 mL FDA bottle (10 pcs)
- HI 740069P** Cap for 30 mL FDA bottle (10 pcs)
- HI 740084P** 500 mL FDA bottle (10 pcs)
- HI 740086** 500 mL FDA bottle (6 pcs)
- HI 740087P** Cap for 500 mL FDA bottle (10 pcs)
- HI 740082P** 1 L FDA bottle (10 pcs)
- HI 740083P** Cap for 1 L FDA bottle (10 pcs)

### Bottle, Polyethylene, Rectangular

These bottles complete the range of HANNA bottles. They are typically provided as containers for the reagents of the PCA analyzers.

- HI 740074P** 460 mL rectangular bottle (10 pcs)
- HI 740076P** 460 mL rectangular bottle (10 pcs)
- HI 740077P** Cap for 460 mL rectangular bottle (10 pcs)

## Bracket for Installation of Process Meters

To be used for installation of panel mounted process meters, such as BL 931700, HI 8710 and pH 500.

- HI 740145** Mounting bracket for HI 8710 housing (2 pcs)
- HI 740146** Mounting bracket for BL 931700 housing (2 pcs)
- HI 740147** Mounting bracket for pH 500 housing (2 pcs)

## Burette

Glass burette for liquid dosing, ideal tool for educational and laboratory applications. The reagent can be accurately dosed with a resolution of 0.1 mL. The burette is supplied with a reagent glass container to perform up to 100 tests before requiring refilling.

- HI 740195** 10 mL glass burette with 500 mL reagent container and pressure bulb
- HI 740212** 25 mL glass burette with 1 L reagent container and pressure bulb

## Cable

### Cable, 6-wire

6-wire cable for 4-ring conductivity probes. Several lengths are available.

- HI 779/1** 6-wire cable, 1 m (3.3')
- HI 779/3** 6-wire cable, 3 m (9.9')
- HI 779/5** 6-wire cable, 5 m (16.5')
- HI 779/10** 6-wire cable, 10 m (33')
- HI 779/15** 6-wire cable, 15 m (49.5')



HI 710084P



HI 740146



HI 740145



HI 779/5



## Accessories

### Cable Connection for Electrodes

Wide range of connection cables for pH and ORP electrodes, available with several options for connectors and cable lengths. Connection cable without connectors, dia 3 mm (0.12")

<b>HI 7853/1</b>	Cable for electrodes, 1 m (3.3')
<b>HI 7853/3</b>	Cable for electrodes, 3 m (9.9')
<b>HI 7853/5</b>	Cable for electrodes, 5 m (16.5')
<b>HI 7853/10</b>	Cable for electrodes, 10 m (33')
<b>HI 7853/15</b>	Cable for electrodes, 15 m (49.5')

### Cable Connection for HI 931002

To connect pH and ORP process controllers to the HI 931002 simulator and perform all calibration procedures.

<b>HI 7862/1</b>	HI 931002 connection cable, 1 m (3.3')
<b>HI 7863</b>	Cable for electrodes DIN/BNC for HI 931001 and HI 8427, 1 m (3.3')

### Cable Connection with one screw-cap connector at one end, dia 5 mm (0.2")

<b>HI 778P/1</b>	Cable for electrodes with screw-cap connector, 1 m (3.3')
<b>HI 778P/3</b>	Cable for electrodes with screw-cap connector, 3 m (9.9')
<b>HI 778P/5</b>	Cable for electrodes with screw-cap connector, 5 m (16.5')
<b>HI 778P/10</b>	Cable for electrodes with screw-cap connector, 10 m (33')
<b>HI 778P/15</b>	Cable for electrodes with screw-cap connector, 15 m (49.5')
<b>HI 778P</b>	Cable for electrodes with screw-cap connector, 100 m (333')

Cable Connection, 3 mm (0.12") dia. with a screw-cap connector at one end. The other end can be free or provided with a BNC, DIN or US standard connector.

<b>HI 7854/1</b>	Connection cable with screw-cap connector, 1 m (3.3')
<b>HI 7854/3</b>	Connection cable with screw-cap connector, 3 m (9.9')
<b>HI 7854/5</b>	Connection cable with screw-cap connector, 5 m (16.5')
<b>HI 7854/10</b>	Connection cable with screw-cap connector, 10 m (33')
<b>HI 7854/15</b>	Connection cable with screw-cap connector, 15 m (49.5')
<b>HI 7855/1</b>	Connection cable with screw and BNC connectors, 1 m (3.3')
<b>HI 7855/3</b>	Connection cable with screw and BNC connectors, 3 m (9.9')
<b>HI 7855/5</b>	Connection cable with screw and BNC connectors, 5 m (16.5')
<b>HI 7855/10</b>	Connection cable with screw and BNC connectors, 10 m (33')
<b>HI 7855/15</b>	Connection cable with screw and BNC connectors, 15 m (49.5')
<b>HI 7856/1</b>	Connection cable with screw and US connectors, 1 m (3.3')
<b>HI 7856/3</b>	Connection cable with screw and US connectors, 3 m (9.9')
<b>HI 7856/5</b>	Connection cable with screw and US connectors, 5 m (16.5')
<b>HI 7856/10</b>	Connection cable with screw and US connectors, 10 m (33')
<b>HI 7856/15</b>	Connection cable with screw and US connectors, 15 m (49.5')
<b>HI 7857/1</b>	Connection cable with screw and DIN connectors, 1 m (3.3')
<b>HI 7857/3</b>	Connection cable with screw and DIN connectors, 3 m (9.9')
<b>HI 7857/5</b>	Connection cable with screw and DIN connectors, 5 m (16.5')
<b>HI 7857/10</b>	Connection cable with screw and DIN connectors, 10 m (33')
<b>HI 7857/15</b>	Connection cable with screw and DIN connectors, 15 m (49.5')

Cable Connection, 3 mm (0.12") dia. with a BNC connector at one end. The other end can be provided with a BNC, DIN, US standard connector or spade lug.

<b>HI 7858/1</b>	Connection cable with BNC and BNC connectors, 1 m (3.3')
<b>HI 7858/3</b>	Connection cable with BNC and BNC connectors, 3 m (9.9')
<b>HI 7858/5</b>	Connection cable with BNC and BNC connectors, 5 m (16.5')
<b>HI 7858/10</b>	Connection cable with BNC and BNC connectors, 10 m (33')
<b>HI 7858/15</b>	Connection cable with BNC and BNC connectors, 15 m (49.5')
<b>HI 7859/1</b>	Connection cable with BNC and DIN connectors, 1 m (3.3')
<b>HI 7859/3</b>	Connection cable with BNC and DIN connectors, 3 m (9.9')
<b>HI 7859/5</b>	Connection cable with BNC and DIN connectors, 5 m (16.5')
<b>HI 7859/10</b>	Connection cable with BNC and DIN connectors, 10 m (33')
<b>HI 7859/15</b>	Connection cable with BNC and DIN connectors, 15 m (49.5')
<b>HI 7860/1</b>	Connection cable with BNC and US connectors, 1 m (3.3')
<b>HI 7860/3</b>	Connection cable with BNC and US connectors, 3 m (9.9')
<b>HI 7860/5</b>	Connection cable with BNC and US connectors, 5 m (16.5')
<b>HI 7860/10</b>	Connection cable with BNC and US connectors, 10 m (33')



HI 7862/1



HI 7856/1



HI 7858-15

HI 7861/1



- HI 7860/15** Connection cable with BNC and US connectors, 15 m (49.5')
- HI 7861/1** Connection cable with BNC conn. and spade lug, 1 m (3.3')
- HI 7861/3** Connection cable with BNC conn. and spade lug, 3 m (9.9')
- HI 7861/5** Connection cable with BNC conn. and spade lug, 5 m (16.5')
- HI 7861/10** Connection cable with BNC conn. and spade lug, 10 m (33')
- HI 7861/15** Connection cable with BNC conn. and spade lug, 15 m (49.5')

## Cable, Extension, for K-Type Thermocouple Probes

This coiled cable can be used to extend the cable of all K-type thermocouple probes. It comes with male and female connectors at the two ends, respectively.

- HI 766EX** Extension cable for K-type thermocouple probes, 1 m (3.3')

HI 920010



## Cable, PC Connection, for Bench Meters.

- HI 920010** Serial cable for PC connection (9 to 9-pin)

## Cable, PC Connection, for Portable Meters.

- HI 920011** Serial cable for PC connection (5 to 9-pin)

HI 920011



## Cable, USB PC Connection

- HI 7698281** USB PC connection cable for HI 9828
- HI 920013** USB cable for PC connection (excluding HI 9828, use HI 7698281 instead)
- HI 920014** Mini USB cable for PC connection

## Calibration, Tool

To perform manual calibration of the HI 99104 pH tester.

- HI 740091P** Calibration tool for HI 99104 (20 pcs)

## Cap

Cap, Beaker –see *Beaker*

Cap, Bottle –see *Bottle*

## Cap, Cuvette

To be used with cuvettes for photometers, turbidity and Checker HC™ meters.

- HI 731325** Cap for cuvette for turbidity meters (4)
- HI 731325N** Cap for cuvette for HI 832xx series (4)
- HI 731335N** Cap for cuvette for HI 96 series (4)
- HI 731225** Caps for Checker HC™ cuvettes (4)
- HI 731325W** Caps for HI 837 series of photometers (4)

HI 740178



HI 740194



## Cap, Protective

Prevents tester and probe damage due to accidental impacts.

- HI 740162P** Protective cap for Checktemp® (5 pcs)
- HI 740164** Protective cap for HI 1083
- HI 740165** Protective cap for HI 1330
- HI 740166** Protective cap for HI 1331
- HI 740167** Protective cap for HI 2031
- HI 740169** Protective cap for Hygrocheck®
- HI 740170** Protective cap with O-ring for top compartment in HI 9033 housing
- HI 740172** Protective cap for Piccolo
- HI 740173** Protective cap for Skincheck™ electrode
- HI 740178** Protective cap for RH probes
- HI 740194** Protective cap for pH and ORP electrodes
- HI 740208P** Protective cap for FC 200 (2 pcs)
- HI 740208** Protective cap for FC 200
- HI 740210P** Protective cap for waterproof testers (2 pcs)
- HI 740211** Transparent protective cap for DO probes

C

## Accessories

### Cap for Refillable Electrodes

Plastic cap for refilling hole of all pH and ORP electrodes using liquid electrolyte.

**HI 740093P** Cap for refillable electrodes (20 pcs)

### Cap, Sintered, for RH Probes

Sintered cap for protecting the sensors of HANNA RH probes in harsh environments.

**HI 710011** Sintered cap

### Cap, Transportation, for DO Probes

Protects the membrane of HANNA DO probes during transportation, against accidental impacts.

**HI 740094P** Transportation cap for DO probes (10 pcs)

## Carrying Case

### Rugged

**Rugged carrying case** for photometers and turbidity meters with thermoformed tray to fit instrument, reagents and apparatus. 381 x 311 x 108 mm (15 x 12.2 x 4.2").

**HI 740318** Carrying case for portable 96 series photometers

**Rugged carrying case** for general use. 340 x 230 x 90 mm (13.4 x 9.1 x 3.5")

**HI 710031** General rugged carrying case

**Rugged carrying case** with thermoformed tray for HANNA portable meters. 312 x 248 x 45 mm (12.3 x 9.8 x 1.8")

**HI 710132** General rugged carrying case for HI 8314 style casing

**HI 710133** General rugged carrying case for HI 991300 style casing

**HI 710134** General rugged carrying case for HI 98703 style casing

**HI 710136** General rugged carrying case for HI 9125 style casing

**HI 710137** General rugged carrying case for HI 993310 style casing

**HI 710139** General rugged carrying case for HI 93703 style casing

**HI 710141** General rugged carrying case for HI 9063 style casing

**Rugged carrying case** for HI 93703 turbidity meter with thermoformed tray complete with calibration and cleaning solutions, cleaning cloths and cuvettes. 312 x 248 x 45 mm (12.3 x 9.8 x 1.8").

**HI 710138** General rugged carrying case for HI 93703

**Rugged carrying case** with thermoformed tray and sample preparation kit for HI 83099. 381 x 311 x 108 mm (15 x 12.2 x 4.2")

**HI 83099-100** Sample preparation kit in rugged carrying case for HI 83099

**Rugged carrying case** with thermoformed tray and sample preparation kit for HI 83200. 381 x 311 x 108 mm (15 x 12.2 x 4.2")

**HI 83200-100** Sample preparation kit in rugged carrying case for HI 83200

**Rugged carrying case** with thermoformed tray for chemical test kits. The tray allows orderly placement of the reagents in each test kit.

**HI 740098** Carrying case for HI 3813

**HI 740099** Carrying case for HI 3814

**HI 740100** Carrying case for HI 3816

**HI 740101** Carrying case for HI 3817

**HI 740102** Carrying case for HI 3819

**HI 740103** Carrying case for HI 3821

**HI 740104** Carrying case for HI 3823

**HI 740105** Carrying case for HI 3825

**HI 740106** Carrying case for HI 3827

**HI 740107** Carrying case for HI 3828

**HI 740108** Carrying case for HI 3837

**HI 740115** Carrying case for HI 3835

**HI 740197** Carrying case for HI 3810

**HI 740201** Carrying case for HI 3822



HI 740318



HI 710031



HI 710132



HI 710134



HI 710137



HI 710141







HI 710141

## Carrying Case, for Testers

In addition, several rugged carrying cases are available for other HANNA products, such as pocket meters.

- HI 740109 Carrying case for Piccolo
- HI 740110 Carrying case for HI 96107 housing
- HI 740112 Carrying case for Conmet

## Carrying Case, Soft

**Soft carrying case** for HI 8014 and portable photometer housing. 230 x 130 x 50 mm (9.1 x 5.1 x 2").

- HI 710001 Soft carrying case for HI 8014 housing

**Soft carrying case** for portable thermistor thermometers. 280 x 120 x 50 mm (11 x 4.7 x 2").

- HI 710002 Soft carrying case for portable thermistor thermometers

**Soft carrying case** for HI 93510 and HI 955501 housings. 150 x 90 x 30 mm (5.9 x 3.5 x 1.2").

- HI 710004 Soft carrying case for HI 93510 housing

**Soft carrying case** for HYGROCHECK®.

- HI 740203 Soft carrying case for HYGROCHECK®

## Case, Protective

Protective case for portable meters.

- HI 710118 Protective case with tray for HI 93530N housing
- HI 710119 Protective case tray for HI 93510N housing with probe
- HI 710120 Protective case tray for HI 9040 housing with probe
- HI 710122 Protective case tray for HI 8424 housing
- HI 710123 Protective case tray for HI 991300 housing

## Cell

Cell, Colorimetric, for PCA Series –see *PCA Spare Parts*

Cell, Measurement, for Photometers and Turbidity Meters –see *Cuvette*



HI 740219

## COD Test Tube Adapter

- HI 740219 COD test tube adapter
- HI 740235 COD adapter for HI 83099

## Connector

Connectors to repair or customize the probe connection cables.

- HI 740116 BNC connector (2 pcs)
- HI 740117 DIN connector (2 pcs)
- HI 740118 US standard connector (2 pcs)
- HI 731323 Phono style plug with 1 m (3.3') cable and wire end for HI 762 and HI 765 series of temperature probes (4 pcs)
- HI 76P2-10 Phono style plug with 10 m (33') cable and wire end for HI 762 and HI 765 series of temperature probes (4 pcs)

## Connector, Undecal

11-pin connector for all electrical connections of HI 7871, HI 7873 and HI 8666.

- HI 7164 Undecal connector



HI 7164

## C Accessories

### Cover

#### Cover for Battery Compartment

Spare battery covers for portable and pocket meters.

- HI 740002P** Battery cover for Checker® (10 pcs)
- HI 740003P** Battery cover for Checktemp® (10 pcs)
- HI 740004P** Battery cover for Checktemp® 1 (10 pcs)
- HI 740005P** Battery cover for Checktemp® 2 (10 pcs)
- HI 740006** Battery cover for Conmet
- HI 740007P** Battery cover for HI 9040 casing (10pcs)
- HI 740010P** Battery cover for HI 9041 casing (10 pcs)
- HI 740011P** Battery cover for Piccolo + (10 pcs)
- HI 740013P** Battery cover for HI 9214 casing (10 pcs)
- HI 740015P** Battery cover for infrared thermometer casing (10 pcs)
- HI 740017P** Battery cover for Hygrocheck® (10 pcs)
- HI 740019P** Battery cover for HI 83221 (10 pcs)
- HI 740020P** Battery cover for HI 99104 (10 pcs)
- HI 740021P** Battery cover for Piccolo (10 pcs)
- HI 740022P** Battery cover with O-ring for waterproof testers (10 pcs)
- HI 740023** Battery cover for Watercheck
- HI 740207P** Battery cover for HI 93703 (10 pcs)

#### Cover for Fuse Holder

Spare cover for fuse holder of process instrumentation.

- HI 740119P** Cover for fuse holder (10 pcs)

#### Cover for Housing

Used for housing protection and internal electronics. Transparent covers for front panels of process meters and built-in printers.

- HI 740120** Left keyboard cover for HI 120 series
- HI 740121** Right plastic cover for wall mounted instruments
- HI 740122P** Plastic cover for terminals of BL 7916 and BL 7917 (2 pcs)
- HI 740124P** Rear cover for HI 140 series (2 pcs)
- HI 740125P** Rear cover for HI 981401 (2 pcs)
- HI 740126** Rear cover for HI 8614 housing
- HI 740129** Transparent front cover for BL 7916 and BL 7917
- HI 740130** Transparent front cover for HI 8710 housing
- HI 740131** Transparent front cover for BL minicontrollers

### Cube, Color for CTK

Spare comparison cubes for colorimetric chemical test kits.

- HI 3824-99** Color cube for ammonia test kit
- HI 3830-99** Color cube for bromine test kit
- HI 3831-99** Color cube for chlorine test kit
- HI 3832-99** Color cube for iodine test kit
- HI 3833-99** Color cube for phosphate test kit
- HI 3834-99** Color cube for iron test kit
- HI 3874-99** Color cube for nitrate test kit

### Cradle, Docking

Docking cradle for quick and easy placement of your instrument for PC connection.

- HI 143001** RS232 communication cradle complete with Windows® compatible software for HI 143 T-logger.
- HI 143002** USB communication cradle complete with Windows® compatible software for HI 143 T-logger.



HI 740022P



HI 3834-99

HI 3833-99



HI 143002



HI 731331

HI 731318



HI 76404



HI 76404N



HI 76405



## Cuvette

The glass cuvette is the most sensitive part for taking accurate measurements with photometers and turbidity meters. It is important that the cuvette is always clean and without scratches.

- HI 731321 Glass cuvette for HI 832xx series (4)
- HI 731332P Spare cuvettes for bench photometers (100)
- HI 731331 Glass cuvette for HI 96 series (4)
- HI 731311 Glass vial with cap for HI 83214 (5)
- HI 731331N Spare cuvette for HI 98703 turbidity meter (4)



## Cuvette Cleaning Cloth

These non-abrasive cloths are ideal to wipe measurement cuvettes of photometers and turbidity meters, without damaging the cuvette surface.

- HI 731318 Cuvette cleaning cloth (4 pcs)



## Demineralized Water

- Demi-02 Bottle to prepare 2 liters of demineralized water
- Demi-05 Bottle to prepare 5 liters of demineralized water
- Demi-10 Bottle to prepare 10 liters of demineralized water



## Electrode Holder

**Cantilever stand** with a large steel base provides greater stability and flexibility, and holds up to three electrodes in any position.

- HI 76404 Electrode holder for pH 209 type bench meters
- HI 76404N Electrode holder for HI 42xx type bench meters
- HI 76405 Electrode holder with steel base
- HI 76405A Cantilever arm
- HI 76405C Steel base for HI 76405
- HI 740035 Electrode holder and plastic beaker for HI 207 and HI 208

### Industrial by-pass loop electrode holder.

- HI 60545 Electrode holder for by-pass loop configurations

**Industrial electrode holder for immersion installation.** Made of rugged PVC, this item can withstand most chemicals.

- HI 6050 Electrode holder for immersion installation, 0.6 m (23.8")
- HI 6051 Electrode holder for immersion installation, 1 m (3.3')
- HI 6052 Electrode holder for immersion installation, 1.6 m (5.25')
- HI 60501 Electrode holder for immersion installation for tanks, vessels, baths and open channels
- HI 60503 Electrode holder for immersion installation for tanks, vessels, baths and open channels
- HI 605011 PVC mounting flange

**Industrial electrode holder for in-line installation.** Two models are available, depending on the electrode thread. Made of fiber-glass reinforced polypropylene, these holders perfectly fit the relevant HANNA pH and ORP electrodes.

- HI 6054B Electrode holder for in-line installation, 3/4x16UNF thread
- HI 6054T Electrode holder for in-line installation, PG 13.5 thread
- HI 60542 Electrode holder for in-line direct pipe installation, PG 13.5 thread



## Electrodes for Testers, Spare Parts

- HI 73106 Spare electrode for HI 98106 and HI 98107
- HI 73108 Spare electrode for HI 9810
- HI 73120 Spare electrode for HI 98120
- HI 73127 Spare electrode for HI 98121, HI 98127, HI 98128, HI 98129 and HI 98130
- HI 73201 Spare electrode for HI 98201
- HI 73202 Spare electrode for HI 98202 and HI 98203

E-I

## Accessories

### Electrode Removal Tool

To remove the probe cartridge of HI 98120, HI 98121, HI 98127, HI 98128, HI 98129, HI 98130, HI 98311 and HI 98312 testers.

HI 73128 Probe removal tool (10 pcs)



HI 73128

### Filter for Chemical Test Kits

Replacement filter cartridge for HI 3838 formaldehyde test kit.

HI 740135 Filter for HI 3838

Filter for PCA –see *PCA Spare Parts*

### Filter Paper

Replacement filter papers

HI 740232 Filter paper type 1 (100 pcs)

HI 740233 Filter paper type 2 (100 pcs)

### Fuse

HI 70490P 400 mA, 5 x 20 mm fuse (10 pcs)

HI 740140P 200 mA, 5 x 20 mm fuse (10 pcs)

HI 740136P 1 A, 5 x 20 mm fuse (10 pcs)

HI 740137 1 A, 5 x 20 mm fuse (6 pcs)

HI 740138P 2 A, 5 x 20 mm fuse (10 pcs)

HI 740139 2 A, 5 x 20 mm fuse (6 pcs)

HI 740214 4 A, 5 x 20 mm fuse (1 pcs)

HI 740215 4 A, 5 x 20 mm fuse (6 pcs)

### Holder

Holder for Electrodes –see *Electrode Holder*

Holder for HI 146 Probe

HI 750146 Wall mounting probe holder for HI 146

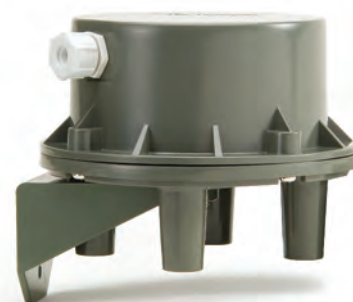


HI 750146

Holder for Level Controller Bars

The HANNA level controllers require measuring bars and this bar holder, which incorporates the amplifier circuitry to operate the controllers.

HI 7874 Bar holder and level transmitter



HI 7874

### Hose

LDPE hose to be used with BL dosing pumps. Different lengths are available.

HI 720029 LDPE hose, 3 m (9.9')

HI 720030 LDPE hose, 10 m (33')

HI 720031 LDPE hose, 50 m (165')

HI 720032 LDPE hose, 100 m (333')

### iButton®

i-Button® tags to be used with Fast Tracker™ compatible meters.

HI 920005 5 tag holders with tags



HI 920005



HI 740221

## Key

Key for HI 141 Magnetic Start

HI 740221 Key for HI 141 magnetic start

Key for Testing Thermometer Calibration

Allows a quick calibration check of the thermistor thermometers. Simply connect the key to the meter and verify that reading is within the key value  $\pm 0.4^{\circ}\text{C}$  (or  $\pm 0.8^{\circ}\text{F}$ ). If not, contact the nearest HANNA instruments® Customer Service Center for recalibration.

### Test keys for thermometers using an HI 762 series probe.

HI 762-18C Test key at  $-18^{\circ}\text{C}$

HI 762000C Test key at  $0^{\circ}\text{C}$

HI 762070C Test key at  $70^{\circ}\text{C}$

HI 762-004F Test key at  $-0.4^{\circ}\text{F}$

HI 762032F Test key at  $32^{\circ}\text{F}$

HI 762158F Test key at  $158^{\circ}\text{F}$

### Test keys for thermometers using an HI 765 series probe.

HI 765-18C Test key at  $-18^{\circ}\text{C}$

HI 765000C Test key at  $0^{\circ}\text{C}$

HI 765070C Test key at  $70^{\circ}\text{C}$

HI 765-004F Test key at  $-0.4^{\circ}\text{F}$

HI 765032F Test key at  $32^{\circ}\text{F}$

HI 765158F Test key at  $158^{\circ}\text{F}$

## Kit

Kit, HI 83215 and HI 83225 Accessories

Complete accessory kit for preparation of samples to be analyzed (nutrients for agriculture) with the HI 83215 photometer.

HI 740223 Plastic beaker (170 mL)

HI 740224 Plastic beaker (170 mL, 12 pcs)

HI 740225 Syringe (60 mL)

HI 740226 Pipette (5 mL)

HI 740227 Filter

HI 740228 Filter (25 pcs)

HI 740229 Polypropylene cylinder (100 mL)

HI 740230 Demineralized bottle (230 mL)

HI 93703-54 Dried resin (100 g)

HI 93703-55 Activated carbon (for 50 tests)

HI 83215-100 Sample preparation kit in rugged carrying case for HI 83215

HI 83225-100 Sample preparation kit in rugged carrying case for HI 83225

Kit, HI 9828 and HI 9829 Accessories

Accessories designed for HI 9828 and HI 9829 multiparameter portable meter and HI 76X9828 probe series. For a full list, refer to them in our Multiparameter section.

HI 920005 i-Button® with holder (5 pcs)

HI 7698282 Maintenance probe kit

HI 710045 Power supply cable

HI 710046 Lighter cigarette cable

HI 721320 Complete carrying case

## Lamp, Turbidimeter

HI 740234 Replacement lamp for EPA turbidimeter



HI 762



HI 765



HI 710046



HI 7698281



HI 7698282



HI 7698284

HI 7698283



HI 710045

HI 740234



L-P

## Accessories

### Lysimeter, Suction

Designed to be used with the HANNA HI 83215 and HI 83225, this lysimeter is available in three sizes and is comprised of: sampler tube ending in a porous tip, capillary rubber tube with rubber cap and finger clamp, cleaning solution starter kit, 30 mL syringe and instructions.

- HI 83900-30 Suction lysimeter, 30 cm (0.98') tube
- HI 83900-60 Suction lysimeter, 60 cm (1.97') tube
- HI 83900-90 Suction lysimeter, 90 cm (2.95') tube
- HI 83900-25 Cleaning solution replacement kit, 500 mL



HI 70475

### Mounting Bracket –see Bracket for Installation of Process Meters

### Mounting Kit for Process Instruments

For installation of panel-mounted process instruments with the relevant mounting brackets (supplied with the meter).

- HI 740148P Nut, screw and washer to install HI 8710 housing (10 pcs)
- HI 740150P Nut, screw and washer to install pH 500 housing (10 pcs)



HI 70477

### Nut

Plastic nuts to tightly seal electrical connections for transmitters to an HI 8614 housing, ensuring IP65 protection rate.

- HI 740151P Black plastic nut for HI 8614 housing (10 pcs)
- HI 740152 Grey plastic nut for HI 8614 housing



HI 70478

HI 70479

### O-ring

Spare O-rings.

- HI 740153P O-ring to secure the HI 1083 protective cap (10 pcs)
- HI 740154 O-ring to secure the HI 1083 protective cap (6 pcs)
- HI 60501-0 O-rings for HI 60501
- HI 60542-0 O-rings for HI 60542
- HI 60545-0 O-rings for HI 60545



HI 70482

### PCA Spare Parts

Complete list of accessories and spare parts to be used with the PCA series of process analyzers, for measurement and maintenance purposes.

- HI 70473 PCA tubing kit, pressure regulator to drain (2 pcs)
- HI 70474 PCA peristaltic pump tubing kit (6 pcs)
- HI 70475 PCA peristaltic pump tubing kit (2 pcs)
- HI 70476 Reagent bottle tubing kit (6 pcs)
- HI 70477 PCA Y strainer and tubing to measuring cell (2 pcs)
- HI 70478 PCA tubing kit, bottle to pump (6 pcs)
- HI 70479 PCA tubing kit, pump to Y strainer (8 pcs)
- HI 70482 5 µm and 50 µm input filters for PCA series
- HI 70483 PCA complete tubing kit
- HI 70484 PCA complete tubing kit (3 pcs)
- HI 70485 Magnetic stirrer motor for PCA series
- HI 70486 Magnetic bar for PCA series (2 pcs)
- HI 70487/N PCA measuring cell
- HI 70487/A Adapter set for measuring cell
- HI 70488 PCA electrovalve, 60 Hz
- HI 70489 PCA electrovalve, 50 Hz
- HI 70490 Free chlorine reagent kit



HI 70483



HI 70487/N



HI 70488

HI 70496



HI 70497



HI 731340



HI 731342



HI 731351



HI 731352



- HI 70491** Total chlorine reagent kit
- HI 70492** PCA drain tubing kit
- HI 70493** PCA drain pressure regulator
- HI 70494** PCA calibration port cap
- HI 70495** PCA incoming pressure regulator
- HI 70496** 0.45 µm filter for PCA series
- HI 70497** 50 µm filter for PCA series
- HI 70498** Reagent set for PCA 311, PCA 321 and PCA 331
- HI 70499** Reagent set for PCA 312, PCA 322 and PCA 332

## Pipette

### Pipette for Automatic Dosage

- HI 731340** 200 µL graduated pipette
- HI 731341** 1000 µL graduated pipette
- HI 731342** 2000 µL graduated pipette
- HI 731350** Tip for 200 µL graduated pipette (25 pcs)
- HI 731351** Tip for 1000 µL graduated pipette (25 pcs)
- HI 731352** Tip for 2000 µL graduated pipette (4 pcs)

### Pipette, Capillary

- HI 740155** Capillary pipette (20)

### Pipette (Tip) for Dosing Syringes

This tool allows the user to precisely dose the reagent, avoiding any contamination of the titration syringe during measurements with the chemical test kits. Use one tip for each reagent to prevent cross contamination.

- HI 740144** Pipette tip for syringe (6 pcs)
- HI 740144P** Pipette tip for syringe (10 pcs)

### Pipette for Electrode Refilling

Typically used with refillable pH and ORP electrodes for precise dosage of the electrolyte solution. They are also useful for precision liquid transfer in any field or lab application.

- HI 740157P** Electrode refilling pipette (20 pcs)

## Power

### Power Adapter

These converters enable HANNA meters to operate at 12 Vdc from a 115 Vac or 230 Vac power outlet and are available with several plugs.

- HI 710005** 115 Vac to 12 VDC, US plug
- HI 710006** 230 Vac to 12 VDC, European plug
- HI 710012** 230 Vac to 12 VDC, UK plug
- HI 710013** 230 Vac to 12 VDC, South African plug
- HI 710014** 230 Vac to 12 VDC, Australian plug
- HI 710017** 115 Vac to 12 VDC, Japanese plug
- HI 710005/8** 115V to 12VDC adapter for HI 42xx family
- HI 710006/8** 230V to 12VDC adapter for HI 42xx family
- HI 71005/8** 115 Vac to 12 VDC, 800 mA
- HI 71006/8** 230 Vac to 12 VDC, 800 mA

### Power Cord

These cords power all HANNA meters requiring direct 115 Vac or 230 Vac supply.

- HI 740198** Power cord with European plug
- HI 740199** Power cord with US plug

HI 740199



P-S

## Accessories

### Power Plug

To be used with old wall mounted controllers and external devices (such as pumps or electrovalves) driven by the controllers, and with BL 7916 and BL 7917.

- HI 767/P Input plug (5 pcs)  
HI 7671/P Output plug (5 pcs)

### Pump Spare Parts

List of necessary spare parts for operation and maintenance of dosing pumps.

- HI 721003 Glass ball with O-ring (10 pcs each)  
HI 721004 Injection valve assembly  
HI 721005 Foot valve assembly  
HI 721006 Spring (4 pcs)  
HI 721008 Ceramic weight (4 pcs)  
HI 720029 LDPE hose, 3 m (9.9')  
HI 720030 LDPE hose, 10 m (33')  
HI 720031 LDPE hose, 50 m (165')  
HI 720032 LDPE hose, 100 m (333')  
HI 721101 Pumphead, O-ring, screws (6 pcs) and washers (6 pcs)  
HI 721102 Discharge valve assembly  
HI 721103 Suction valve assembly  
HI 721108 PVDF nut (25 pcs)  
HI 740156 Valve seat (3 pcs)

### Rack, Test Tube Cooling

- HI 740216 Test tube cooling rack (25 holes)

### RH Calibration Chamber

These portable chambers allow you to easily calibrate your hygrometers. They measure 190 x 115 x 110 mm (7.5 x 4.5 x 4.3"), and are supplied complete with O-ring and precalibrated, ready-to-use saturated salts.

The HI 7101 model is designed for use with HI 9064 and HI 9065, while the HI 7102 is for use with the HI 93640 and HI 8666 hygrometers.

- HI 7101 Calibration chamber for RH probes with sintered cap  
HI 7102 Calibration chamber for RH probes without sintered cap

### RH Calibration Salt

**LiCl calibration salt** for HI 7101 and HI 7102 calibration chambers (low RH).

- HI 7111/P LiCl calibration salt, 15 g bottle (6 pcs)  
HI 7111 LiCl calibration salt, 15 g bottle

**NaCl calibration salt** for HI 7101 and HI 7102 calibration chambers (high RH).

- HI 7121/P NaCl calibration salt, 33 g bottle (6 pcs)  
HI 7121 NaCl calibration salt, 33 g bottle

### Scissors

Standard HANNA small scissors.

- HI 740051P Blue scissors (10)

### Screwdriver for Calibration

Calibration screwdriver, length 90 mm (3.5"), to perform manual calibration with trimmers.

- HI 731326 Calibration screwdriver (20 pcs)



HI 721003



HI 721004

HI 721005



HI 721006

HI 721008

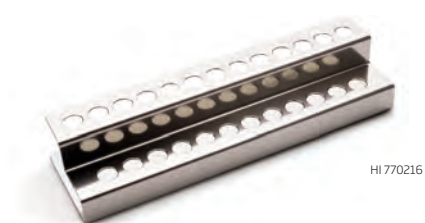


HI 721101



HI 721103

HI 740156



HI 770216



HI 7102



HI 7121/P

## Shield, Safety

Safety shield that connects to the top of the HI 839800 test tube heater.

**HI 740217** Laboratory bench safety shield for HI 839800

## Sleeve

Sleeve, Protective, for Conductivity Probes

These sleeves are needed to correctly perform EC and TDS measurements with HANNA probes. In addition, they protect sensors against accidental impact.

- HI 740179** Protective PVC sleeve for Conmet
- HI 740180** Protective PVC sleeve for HI 76302W
- HI 740181** Protective PVC sleeve for HI 1285
- HI 740182** Protective PVC sleeve for HI 76303



HI 731326

Sleeve, Protective, for DO Probes

Protective sleeve designed HI 76409 series of dissolved oxygen probes.

**HI 76409-0** Protective sleeve for HI 76409 series

## Software

Use the following Windows® compatible softwares to handle PC connection of the relevant HANNA meters.

- HI 92000** Windows® compatible software for logging instruments, photometers and turbidity meters
- HI 92140** Windows® compatible software for HI 140 and HI 142 series
- HI 141000** Windows® compatible software for HI 141 series
- HI 92143** Windows® compatible software for HI 143 series
- HI 92500** Windows® compatible software for microprocessor-based process controllers
- HI 800104** Windows® compatible software for HI 8000 controllers
- HI 981500** Windows® compatible software for pH Turtle (HI 9815)



HI 740217

## Spoon, Dosing

- HI 740133** Dosing spoon (6)
- HI 740132P** Dosing spoon (10)



HI 740181

**Stir Bars for Magnetic Stirrers** –see *Bars, Stir Bars for Magnetic Stirrers*

## Syringe

Graduated syringe for accurately reagent dosing for CTK and photometers.

- HI 740225** 60 mL graduated syringe
- HI 740226** 60 mL graduated syringe
- HI 740142P** 1 mL graduated syringe (10 pcs)
- HI 740143** 1 mL graduated syringe (6 pcs)



HI 740225



HI 740226



HI 740143

Syringe, Tip

**HI 740144** Syringe tip for HI 740143 (6 pcs)

T-W

## Accessories

### Terminals, Extractable, for Process Instruments

These extractable modules have been designed for quick and easy wiring of HANNA process meters. They are available for 2, 3 and 4 inputs.

- HI 740191P Extractable terminal, 2 inputs (10 pcs)
- HI 740192P Extractable terminal, 3 inputs (10 pcs)
- HI 740193P Extractable terminal, 4 inputs (10 pcs)
- HI 740204P Large extractable terminal, 2 inputs (10 pcs)
- HI 740205P Large extractable terminal, 3 inputs (10 pcs)



### Test Tube

- HI 740220 Glass test tube with caps, 25 mL (2 pcs)

### Transformer –see Power Adapter

### Transmitter, Infrared, for PC Connection

Simply place the unit on the cradle and the data will be transmitted to the PC through the RS232 serial port.

Infrared interfaces to be used with temperature dataloggers.

- HI 90140 Infrared transmitter for HI 140 series
- HI 141001 Infrared transmitter for HI 141 series

### Tubing Set

- HI 70483T Tube set with cap for titrant and bottle tip

### Vessel for Water Test

Plastic vessel to collect sample being measured with Water Test.

- HI 740088 Vessel for Water Test

### Vial –see also Cuvette

To be used with HI 3835 salinity test kit, to perform the reaction during titration.

- HI 740196P Plastic vial for HI 3835 (20 pcs)

### Weight, Ceramic, for Pumps –see Pump Spare Parts

### Wrist-strap

- HI 740123 Spare wrist-strap for ergonomic portable meters (in HI 93510, HI 8633 and HI 151 housing)

